

**PLEASE SUPPORT OUR
LOCAL SYRUP PARTNER PRODUCERS !**

Antoine's Maple Syrup

342 County Road 33, Lyndhurst
613-928-2473
mkantoine01@yahoo.ca

Curtis Valey Farms

Ernie Curtis
711 Daytown Road, Delta
613-928-2964
Ernest.curtis@sympatico.ca

Gibbons Maple Sugar House

41 Leacock Road, Frankville
613-275-2893
1-877-440-7887
www.gibbonsmaple.com

Gunnebrooke Farms Limited

The Gunnewiek Family
206 County Road 8, Elgin
613-359-5071
gunnfarm@rideau.net

Halladay, Darrell

R.R. #4, North Augusta
613-924-1320
maple@hallaymaple.vpweb.ca

Leggett's Maple Syrup

Bruce and Kathy Leggett
637B Crosby Road, Crosby
613-246-6542
www.leggettmaplesyrup.com

Mensen Farm

Gary and Susie Mensen
161 County Road 42, Delta
613-928-2555
gmensen@sympatico.ca



**PLEASE SUPPORT OUR
LOCAL SYRUP PARTNER PRODUCERS !**

Quabbin Hill Maples

Greg and Linda Halladay
156 Quabbin Hill Rd., Mallorytown
613-659-3227
quabbin@1000island.net

Sugar Maple Farms

The Chant Family
3189 Thousand Acre Road, Portland
613-272-2616

Vali Rill Farm

Scott Pattermore
650 Lake Street, Plum Hollow
613-924-1905

**The NAME of YOUR FAVORITE
SYRUP PRODUCER
could be listed HERE!
Contact 613-928-2800**



WE NEED YOUR HELP!

*If you are able to assist at
this year's festival cleaning tables,
please contact the following:*

Heather Halladay 613-928-2995

Vendor spaces are still available for
outdoor locations and indoor craft sale tables.

*If you are interested in reserving space,
please contact the following:*

Marlaine Hart 613-924-2407

Vendor reservation forms can be
downloaded from the website:

www.deltafair.com

Points of Interest

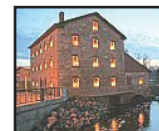
Delta Fair - 187th Anniversary

July 27th to July 30th
Website: www.deltafair.com
Contact: 613-928-2800



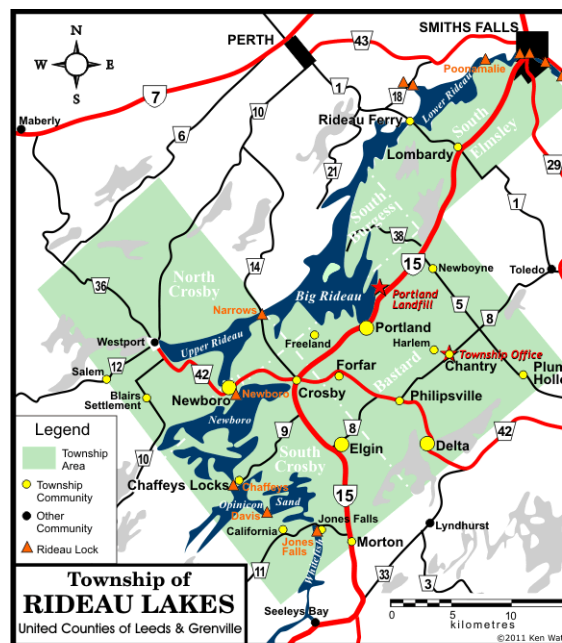
Old Stone Mill

National Historic Site
Open from
Victoria Day Weekend to Labour Day Weekend
Harvest Festival
September 30th
Website: www.deltamill.org
Contact: 613-928-2584



Lower Beverley Lake Park

Open from
Mother's Day Weekend to
Thanksgiving Weekend
Celebrating the Season
Saturday evenings from
Nov 18th to Dec 16th / 5:00 p.m. to 8:30 p.m.
Website: www.beverleylakepark.com
Contact: 613-928-2881



**Delta
Maple Syrup
Festival
2017**

Saturday, April 15

9 a.m. to 3 p.m.
&

Sunday, April 16

9 a.m. to 3 p.m.



A community event
sponsored by the
Delta Agricultural Society

For more information
Visit

www.deltafair.com



HISTORY of the DELTA MAPLE SYRUP FESTIVAL

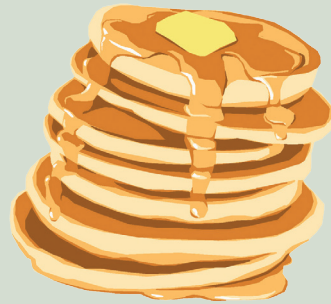
The Delta festival was the first maple celebration to be established in the area. In planning for Canada's Centennial, a small group of dedicated volunteers met regularly in the Council Chambers at the Old Town Hall. As President of the group, Harold Russell worked tirelessly as he contacted every farmer, arranged for sugar bush tours, promoted sugaring off demonstrations and held jack wax parties.

Other community members who were heavily involved with the initial planning included Arch Ostrom, Lloyd Irwin, Vera Sheridan, Mildred Sweet, Sally Halladay, Ronald Morris, Lloyd Sawyer, Howard Jones, Sidney Talbot, and Glenn & Irma Chant.

In the beginning, the festival was a three-day event held in March at which thousands of pancakes smeared with Leeds County butter and flooded with fresh local maple syrup were served to busloads of students on school trips and visitors from communities throughout Eastern Ontario. In order to keep up with the crowds, meals were served on both floors of the Old Town Hall. Visitors were able to tour 15 local sugar bushes along with watching maple syrup being bottled and maple candy being made in the Confederated Foods / United Maple Products building.

The first event was held on April 7th and 8th, 1967 from 10:00 a.m. to 7:00 p.m. with the elementary school students visiting on Friday, April 6th. Tickets for the "All You Can Eat" pancake meal were available to adults for \$1.00 while children paid 50 cents.

In 1992, the festival was downsized to a two-day event and in 1999 it was relocated to the fairgrounds. The festival has continued through the volunteer efforts of many local residents and organizations before becoming a project for the membership of the Delta Agricultural Society.



"ALL YOU CAN EAT PANCAKES FLOODED WITH FRESH, LOCAL MAPLE SYRUP"

First Order of Pancakes
Served with Sausage / Gluten Free
Pancakes Available



Saturday from 9:00 a.m. to 3:00 p.m.

Sunday from 9:00 a.m. to 3:00 p.m.

11 Years of Age and Over: \$10.00
Children Under 11 Years: \$5.00
HST now included

DELTA MAPLE SYRUP FESTIVAL

**Saturday, April 15th
and**

Sunday, April 16th, 2017

Delta Fair Grounds,
110 Mill Creek Drive,
Delta, Ontario K0E 1G0

FESTIVAL ACTIVITIES

~ SATURDAY ~

- Pancakes & Sausages** - Fair Hall (1st Floor)
- Craft Sale** - Fair Hall (2nd Floor)
- Maple Syrup and Craft Vendors** (Fair Grounds)
- Petting Zoo** (Fair Grounds)
- Face Painting / Mini Putt / Bean Bag Toss**
(Fair Grounds)
- Walking Cartoon Characters**
(Fair Grounds)
- Tours of the Old Fire Hall Museum**
- Tours of the Old Stone Mill**
- Milling Demonstration at 1:00 p.m.** (Mill)
- Book Sale** (Old Town Hall)
- Wagon Rides** (weather permitting)
- Ball Hockey Tournament** at 10:00 a.m. (Rec Centre)
To register, please contact
Brandon Brooker at 613-929-4699
- Coffee and Bake Shop** (Old Town Hall)
- Easter Egg Hunt** at 11:00 a.m. (Fair Grounds)
Ages 2-4 yrs - 11:00, 5-8 yrs - 11:30, 9-12 yrs - 12:00
- 'Bob Burtch Band'** at 10:00 a.m. (Fair Grounds)
- 'Rynestone Magic'** at 11:45 a.m. (Fair Grounds)
- 'Elvis Tribute'** at 1:00 p.m. (Fair Grounds)
- Blacksmithing Demonstration** (Mill Drive Shed)
- Dance** at 8:00 p.m. (Legion Hall) - Music by DJ

*On the way to the Fair Grounds,
stop at 117 Mill Creek Drive and pick up
some Willard's donuts, cookies and even
butter tarts!*

This year's festival is sponsored in partnership with
the Province of Ontario and Ontario 150.



FESTIVAL ACTIVITIES

~ SUNDAY ~

- Pancakes & Sausages** - Fair Hall (1st Floor)
- Craft Sale** - Fair Hall (2nd Floor)
- Maple Syrup and Craft Vendors** (Fair Grounds)
- Petting Zoo** (Fair Grounds)
- Face Painting / Mini Putt / Bean Bag Toss**
(Fair Grounds)
- Walking Cartoon Characters**
(Fair Grounds)
- Tours of the Old Fire Hall Museum**
- Tours of the Old Stone Mill**
- Milling Demonstration at 1:00 p.m.** (Mill)
- Book Sale** (Old Town Hall)
- Wagon Rides** (weather permitting)
- Visit from the Easter Bunny**
- Dueling Band Joes from Texas Tuxedo**
at 10:00 a.m. (Fair Grounds)
- Air Castle Maize** (Fair Grounds) 11:00 a.m.
- Fire Department Display** (Fair Grounds) 11:00 a.m.
- Gabriella's Drumming Lessons**
at 11:45 a.m. (Fair Grounds Tent)
- Fiddle Earth** at 1:00 p.m. (Fair Grounds)

DID YOU KNOW ????????

During the 2016 festival,
2100 patrons enjoyed
130 kg / 286 lbs. of
sausages, 240 kg / 529 lbs.
of pancake batter mix,
2500 patties of butter, 12 bottles of juice
mix, and 400 lbs. /140 litres of maple syrup.

