



# History of the Maple Syrup Festival



Established in 1967, the Delta Maple Syrup Festival was the first maple celebration to be established in the area. In planning for Canada's Centennial, a small group of dedicated volunteers met regularly in the Council Chambers at the Old Town Hall. As President of the group, Harold Russell worked tirelessly as he contacted every farmer, arranged for sugar shack visits and tours, promoted sugaring off demonstrations and jack wax parties.

Other members of the community who were heavily involved with the planning included Arch Ostrom, Sally Halladay, Ron Morris, Lloyd Sawyer, Howard Jones, Sid Talbot, Glen & Irma Chant. There was little advertising required for the event but huge crowds came from far and near.

In the beginning, the Festival was a three-day event held in March which included feeding pancakes and syrup to busloads of students on school trips. In order to keep up with the crowds, meals were served on both floors of the Old Town Hall. Visitors were able to tour local sugar bushes along with watching maple syrup being bottled and maple candy being made in the Confederated Foods Syrup Plant building.

Over the years, the Festival continued through the efforts of many local residents and Service Clubs before becoming a project for the Directors of the Delta Agricultural Society.

And now, the tradition continues 51 years later!

## Interested in Volunteering?

Table Servers / Cleaners can contact Heather Halladay  
Phone: 613-928-2995

Cooks / Kitchen Support can contact Melinda Cowan  
Phone: 613-924-1849

## Points of Interest

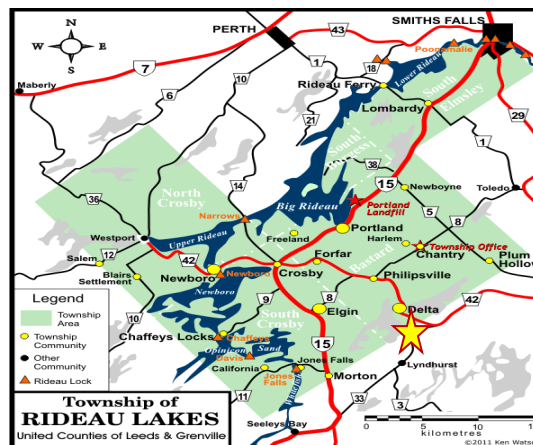
- ❖ **Delta Fair**  
188<sup>th</sup> Anniversary  
July 26<sup>th</sup> to July 29<sup>th</sup>  
Website: [www.deltafair.com](http://www.deltafair.com)  
Contact: 613-928-2800



- ❖ **Old Stone Mill**  
National Historic Site  
Open from  
Victoria Day Weekend to  
Labour Day Weekend  
**Harvest Festival**  
September 29<sup>th</sup>  
Website: [www.deltamill.org](http://www.deltamill.org)  
Contact: 613-928-2584



- ❖ **Lower Beverley Lake Park**  
Open from  
Mother's Day Weekend to  
Thanksgiving Weekend  
**Celebrating the Season**  
*New Dates in 2018!*  
*Friday and Saturday evenings*  
*Nov 30<sup>th</sup> to Dec 22<sup>nd</sup> / 5:00 p.m. to 8:30 p.m.*  
Website: [www.beverlylakepark.com](http://www.beverlylakepark.com)  
Contact: 613-928-2881



51<sup>st</sup> Annual

# Delta Maple Syrup Festival 2018

Saturday, April 21<sup>st</sup>  
&  
Sunday, April 22<sup>nd</sup>

9 a.m. to 3 p.m.  
~Both Days~

A Community Event  
sponsored by the  
Delta Agricultural Society



For more information,  
Visit [www.deltafair.com](http://www.deltafair.com)  
Call 613-928-2800 / Email [deltafair@ripnet.com](mailto:deltafair@ripnet.com)





## Festival Events

### Craft Sale/Flea Market

Upper level of the Fair Exhibit Hall (both days)

### Local Syrup Producers

Local Syrup Producers will be selling maple produce at the Fair Grounds (both days)

### Fun for Kids at the Fair Grounds

Bouncy Maze-Mini Putt-Face Painting (both days)  
Sponsored by  
Lyndhurst Home Building Centre



**Rynestone-Magic with an Edge**  
Sunday at 11:30 a.m.

### **Children's "Big Truck" Experience**

Come and See your Favourite "Big Truck"  
Saturday from 11:00 a.m. to 1:00 p.m.

### **Brockville Speedway Race Car Display**

Sunday from 11:00 a.m. to 1:00 p.m.

### KOPTERS Helicopter Rides

From the Fairgrounds on Saturday  
Starting at 10 a.m. - \$50 per person



### Wagon Rides (weather permitting)

From Fair Grounds to Lower Beverley Lake Park

### Old Stone Mill

Open for tours during both days of the Festival  
Blacksmithing and Milling Demonstrations

### Old Town Hall

Used Book Sale (both days)  
Refreshments available  
Public Washrooms onsite

### Athletic & Recreation Centre

Ball Hockey Tournament on Saturday  
9:00 a.m. to 4:00 p.m.  
Contact Brandon at 613-929-4699 to register

### Fire Hall Museum

Stop in for a visit and see Delta's 1<sup>st</sup> Fire Truck

### Dance at the Legion Hall

8:00 p.m./ \$5.00 per person  
Music by DJ 'Brother Juke Box'



## Festival Events

# Come & Enjoy All You Can Eat Pancakes



## Flooded with Fresh Maple Syrup

First order served with Sausages  
\$1.00 for each additional sausage

in the

Fair Exhibit Hall

at the

Delta Fair Grounds  
110 Millcreek Drive

### Cost

11 Years of Age and Over: \$10.00

Under 11 years of Age: \$5.00

(Note: HST included in price)



### Willard's Baked Goods

On the way to have your pancakes,  
Visit 117 Mill Creek Drive for some  
donuts, cookies and butter tarts!

Specials Thanks  
to



## Maple Syrup Producers



### Antoine's Maple Syrup

342 Lyndhurst Road, Lyndhurst  
613-928-2473 / [mkantoine01@yahoo.ca](mailto:mkantoine01@yahoo.ca)

### Curtis Valey Farms, Ernie Curtis

711 Daytown Road, Delta  
613-928-2964 / [Ernest.curtis@sympatico.ca](mailto:Ernest.curtis@sympatico.ca)

### Findlay Farms, Darrell & Rosanne Findlay

3712-B Townline Road, Toledo  
613-275-4125 / [cleaner.66@hotmail.com](mailto:cleaner.66@hotmail.com)

### Gibbons Maple Sugar House

41 Leacock Road, Frankville  
613-275-2893 / 1-877-440-7887 / [www.gibbonsmaple.com](http://www.gibbonsmaple.com)

### Green Lake Maple, Andreas & Lesley Baumann

403 Lower Oak Leaf Road, Athens  
613-349-2876  
[Andreas.Baumann.pp@gmail.com](mailto:Andreas.Baumann.pp@gmail.com)

### Gunnebrooke Farms Limited, the Gunnewiek Family

206 County Road 8, Elgin  
613-359-5071 / [gunfarm@rideau.net](http://gunfarm@rideau.net)

### Halladay Maple, Darrell Halladay

R.R. # 4, North Augusta  
613-924-1320 / [halladaymaple@gmail.com](mailto:halladaymaple@gmail.com)

### Leggett's Maple Syrup, Bruce and Kathy Leggett

637B Crosby Road, Crosby  
613-246-6542 / [www.leggettmaplesyrup.com](http://www.leggettmaplesyrup.com)

### Mensen Farm, Gary and Susie Mensen

161 County Road 42, Delta  
613-928-2555 / [gmensen@sympatico.ca](mailto:gmensen@sympatico.ca)

### Quabbin Hill Maple, Greg and Linda Halladay

156 Quabbin Hill Rd., Mallorytown  
613-659-3227 / [quabbin@1000island.net](mailto:quabbin@1000island.net)

### Sugar Maple Farms, the Chant Family

3189 Thousand Acre Road, Portland  
613-272-2616

### Vali Rill Farm, Scott Pattermore

650 Lake Street, Plum Hollow  
613-924-1905